



**ASCENDER**®  
ELEVATING TECHNOLOGY SOLUTIONS

**ASCENDER 8.0700**

---

# ASCENDER 8.0700

**Release Date:** 3/1/24 **ASCENDER Update:** 8.0700

Corrected the issue that was preventing the SAT3001-ADSY Campus/District Summary Report from generating data if **ADP** is not entered on *State Reporting > Options > Local Program for Additional Days School Year*.

---

## Attendance > Reports > Attendance Reports > Rosters

Corrected the issue that was causing the **SAT1370-Class Attendance Verification** report to pull incorrect course information for campuses with 4 semesters.

---

## Discipline > Maintenance > Student > Maintenance

Modified the **Reporting Period** field to allow users to manually enter Indicator Codes 7, 8, or 9.

---

## Discipline > Reports > Discipline Reports > SDS1300 - Discipline Audit Report (PEIMS Edits)

Modified the report with the following to update and/or delete rules as needed:

- 44425-0009 Changed 2023 to 2024
- 44425-0010 Deleted rule
- 44425-0026 Added DISCIPLINARY-ACTION-REASON-CODEs 62, 63, 64
- 44425-0027 Removed DISCIPLINARY-ACTION-REASON-CODE 37
- 44425-0029 Removed DISCIPLINARY-ACTION-REASON-CODE 37
- 44425-0034 Changed 2022 to 2023
- 44425-0035 Changed July 1, 2022 to July 1, 2023. Changed June 30, 2023 to June 30, 2024.
- 44425-0047 Added DISCIPLINARY-ACTION-CODEs 06, 26
- 44425-0048 Removed Rule Applies to Charter
- 44425-0049 Removed DISCIPLINARY-ACTION-REASON-CODE 37
- 44425-0057 Added DISCIPLINARY-ACTION-REASON-CODEs 62, 63, 64
- 44425-0062 Removed DISCIPLINARY-ACTION-REASON-CODE 37
- 44425-0072 Added DISCIPLINARY-ACTION-REASON-CODEs 62, 64
- 44425-0073 Added DISCIPLINARY-ACTION-REASON-CODEs 62, 64

## Grade Reporting > Maintenance > Student > Individual Maint > Crs Assign

☐ Modified the program to allow the user to add an ADSY course section to the student's schedule in the prior year if **ADSY** is selected on *Grade Reporting > Maintenance > Master Schedule > Campus Schedule > Section* and if the student has the **Local Program with TEA** PEIMS Code 20, assigned to them.

## Grade Reporting > Maintenance > Student > Accelerated Instruction

☐ Created a new section and page in accordance to TEA requiring the collection of Accelerated Instruction data. Data will be entered at the student level.

The screenshot displays the ASCENDER software interface for 'Accelerated Instruction'. The breadcrumb trail at the top reads 'Maintenance > Student > Accelerated Instruction'. The left sidebar shows a tree view with 'Accelerated Instruction' highlighted in red. The main content area shows a 'Save' button and 'Student Information' tab. Student details include: STUDENT: 305615 : ADAME, CHRISTINA SAUL (09), TEXAS UNIQUE STUDENT ID: 3734769295, and Grad Plan: FD - FOUNDATION. A 'Medical Alert' button is visible. Below this is a table with columns: Del, Details, Subject, Participation Code, Assigned Hours, Completed Hours, Difference, and Difference Reason. The table currently has one row with values: 0.0, 0.0, 0.0. At the bottom, there are input fields for Subject (01 READING/E), Participation (01 Student Par), Assigned Hours (0.0), Completed Hours (0.0), Difference (0.0), and Difference Reason.

## Registration > Maintenance > Student Enrollment > Demo1

☐ Updated the code table used to populate the drop-down menu options for the **As of Status Last Day Enrollment** field to use the values from ET\_C323\_AS\_OF\_STAT\_LST\_DAY\_ENROLL.

---

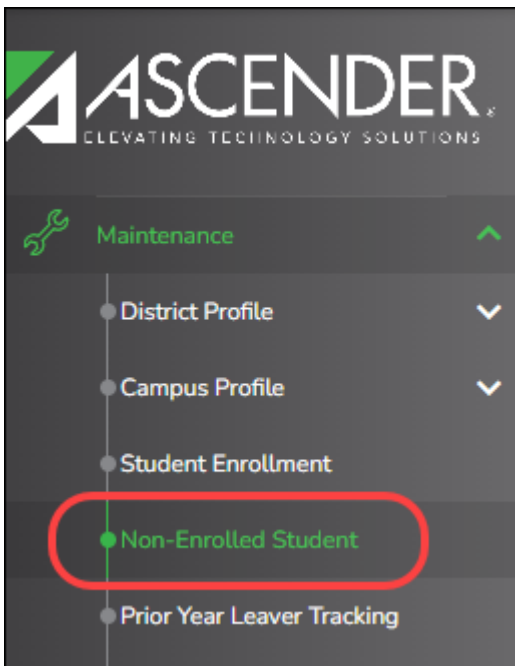
**Health > Reports > Health Reports > Student**

Corrected the issue that was causing the SHS0835 - Communicable Diseases Report to not function properly when printing the main detail report and the summary report.

---

**Registration > Maintenance > Non-Enrolled Student**

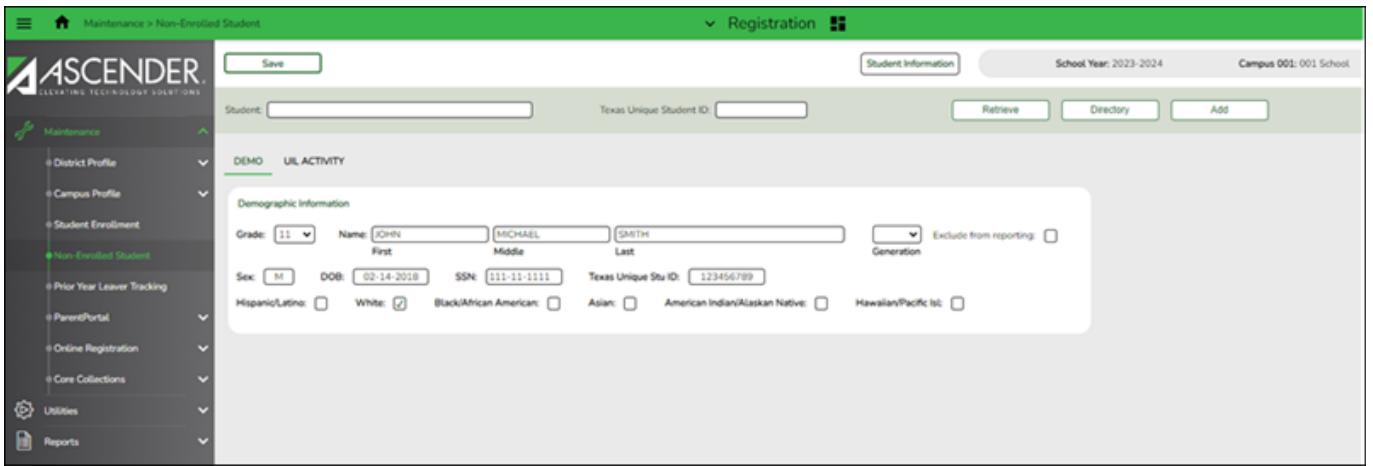
Created a new menu item so users are able to enter Demographic and UIL Activity information for non-enrolled students.



---

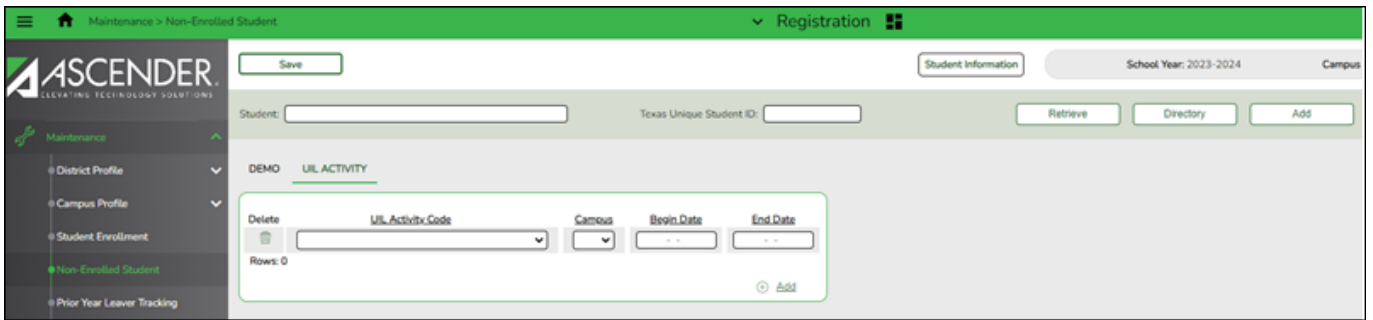
**Registration > Maintenance > Non-Enrolled Student > Demo**

Created a new tab so users are able to enter Demographic information for non-enrolled students.



### Registration > Maintenance > Non-Enrolled Student > UIL Activity

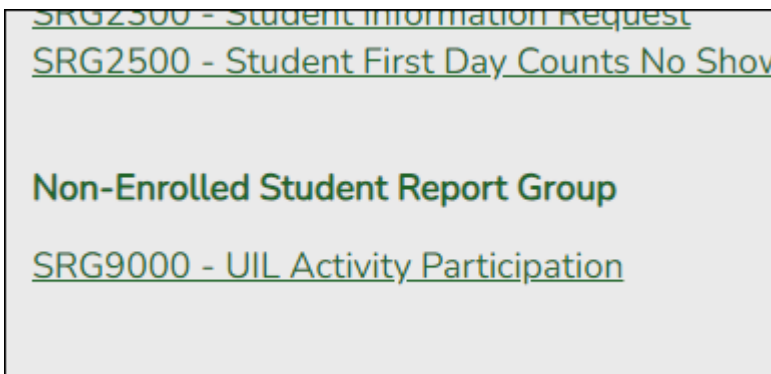
Created a new tab so users are able to enter UIL Activity information for non-enrolled students.



### Registration > Reports > Registration Reports (Non-Enrolled Student)

Created the **Non-Enrolled Student Report Group**.

Created report **SRG9000 - UIL Activity Participation**.



Date Run: 2/28/2024 11:40 PM		UIL Activity Participation					Program ID: SRG9000								
Cnty-Dist: 001-901		101 School					Page: 1 of 1								
Campus: 101															
NAME	UID	SSN	Sex	DOB	Hispanic	Amer Indian	Asian	Black	White	Pacific Isl	Excl	UIL Activity	Campus	Begin Date	End Date
Userious, Test I	1010101234	121-21-2121	M	03-12-2018	N	N	N	N	Y	N	N	010 - Literary Criticism	101	10-10-2023	

## Test Scores > Utilities > Import Test Scores

- Updated the program to align with new Cambium student data standards so that SSN/PEIMS IDs will no longer be included in SDR requests and state assessment results files.
- Added fields for school year 2024 for **TELPAS** and **TELPAS Alternate Test** imports.



**ASCENDER**®  
ELEVATING TECHNOLOGY SOLUTIONS

## **Back Cover**