



**ASCENDER**®  
ELEVATING TECHNOLOGY SOLUTIONS

**ASCENDER 8.0700**

---

# ASCENDER 8.0700

**Release Date:** 3/1/24 **ASCENDER Update:** 8.0700

## Attendance > Reports > Attendance Reports > Audit

Corrected the issue that was causing totals on the SAT0900-Campus/District Summary Report and the SAT0920-Campus/District Multi-Track Summary Report to not match when they should.

Corrected the issue that was preventing the SAT3001-ADSY Campus/District Summary Report from generating data if **ADP** is not entered on *State Reporting > Options > Local Program for Additional Days School Year*.

---

## Attendance > Reports > Attendance Reports > Rosters

Corrected the issue that was causing the **SAT1370-Class Attendance Verification** report to pull incorrect course information for campuses with 4 semesters.

---

## Discipline > Maintenance > Student > Maintenance

Modified the **Reporting Period** field to allow users to manually enter Indicator Codes 7, 8, or 9.

---

## Discipline > Reports > Discipline Reports > SDS1300 - Discipline Audit Report (PEIMS Edits)

Modified the report with the following to update and/or delete rules as needed:

- 44425-0009 Changed 2023 to 2024
- 44425-0010 Deleted rule
- 44425-0026 Added DISCIPLINARY-ACTION-REASON-CODEs 62, 63, 64
- 44425-0027 Removed DISIPLINARY-ACTION-REASON-CODE 37
- 44425-0029 Removed DISIPLINARY-ACTION-REASON-CODE 37
- 44425-0034 Changed 2022 to 2023
- 44425-0035 Changed July 1, 2022 to July 1, 2023. Changed June 30, 2023 to June 30, 2024.
- 44425-0047 Added DISCIPLINARY-ACTION-CODEs 06, 26

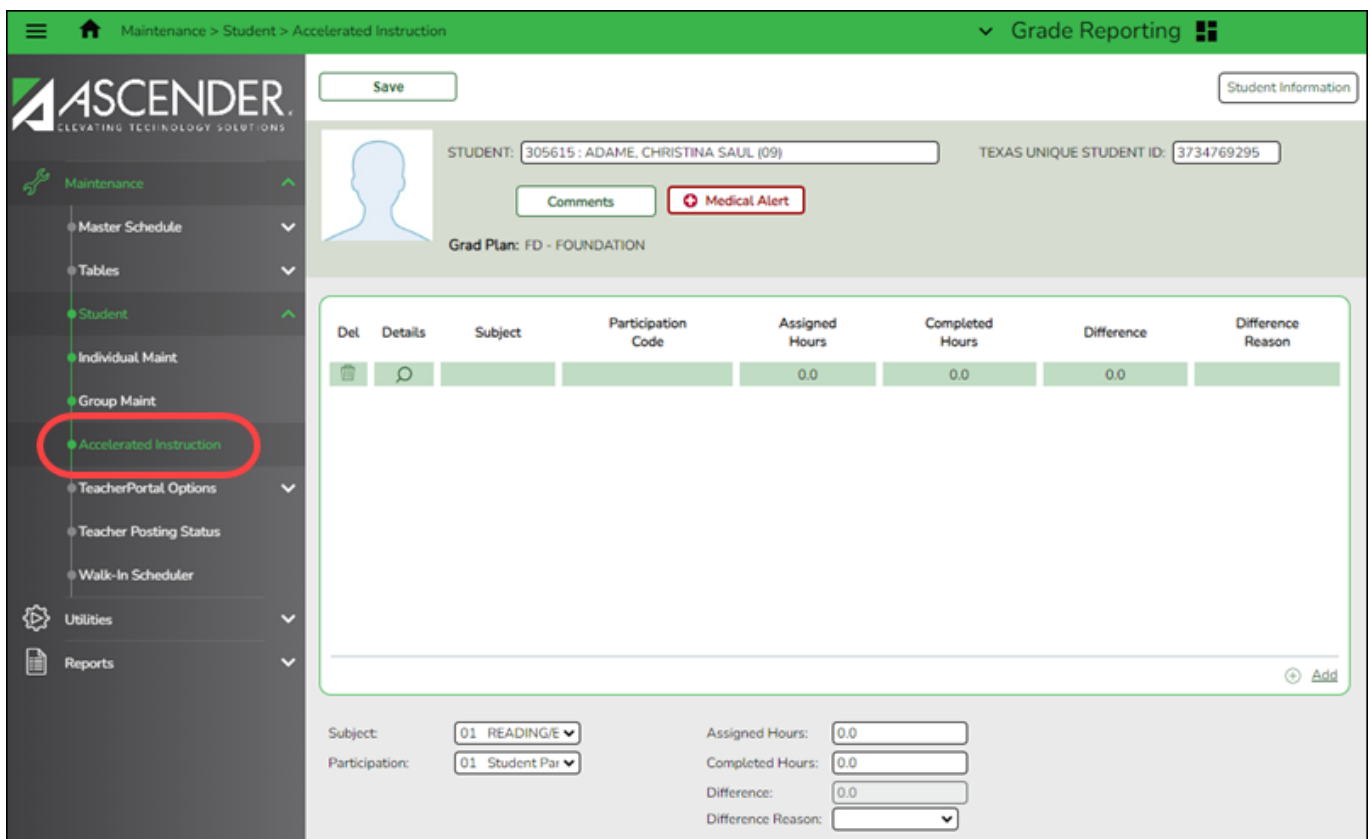
- 44425-0048 Removed Rule Applies to Charter
- 44425-0049 Removed DISCIPLINARY-ACTION-REASON-CODE 37
- 44425-0057 Added DISCIPLINARY-ACTION-REASON-CODEs 62, 63, 64
- 44425-0062 Removed DISCIPLINARY-ACTION-REASON-CODE 37
- 44425-0072 Added DISCIPLINARY-ACTION-REASON-CODEs 62, 64
- 44425-0073 Added DISCIPLINARY-ACTION-REASON-CODEs 62, 64

**Grade Reporting > Maintenance > Student > Individual Maint > Crs Assign**

☐ Modified the program to allow the user to add an ADSY course section to the student's schedule in the prior year if **ADSY** is selected on *Grade Reporting > Maintenance > Master Schedule > Campus Schedule > Section* and if the student has the **Local Program with TEA** PEIMS Code 20, assigned to them.

**Grade Reporting > Maintenance > Student > Accelerated Instruction**

☐ Created a new section and page in accordance to TEA requiring the collection of Accelerated Instruction data. Data will be entered at the student level.



**Health > Reports > Health Reports > Student**

---

Corrected the issue that was causing the SHS0835 - Communicable Diseases Report to not function properly when printing the main detail report and the summary report.

---

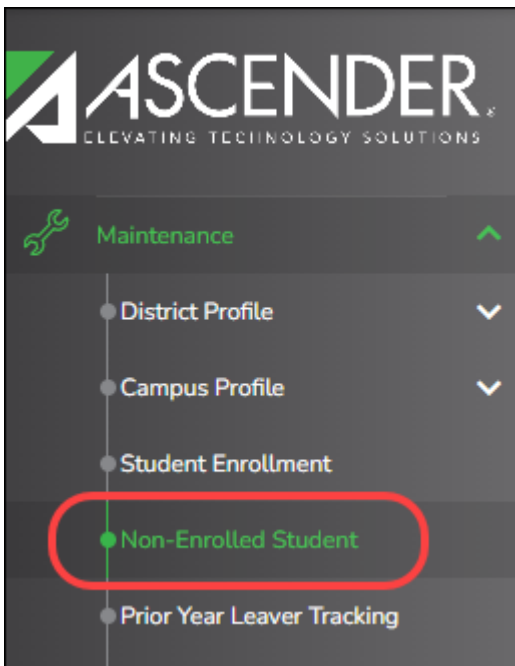
## Registration > Maintenance > Student Enrollment > Demo1

Updated the code table used to populate the drop-down menu options for the **As of Status Last Day Enrollment** field to use the values from ET\_C323\_AS\_OF\_STAT\_LST\_DAY\_ENROLL.

---

## Registration > Maintenance > Non-Enrolled Student

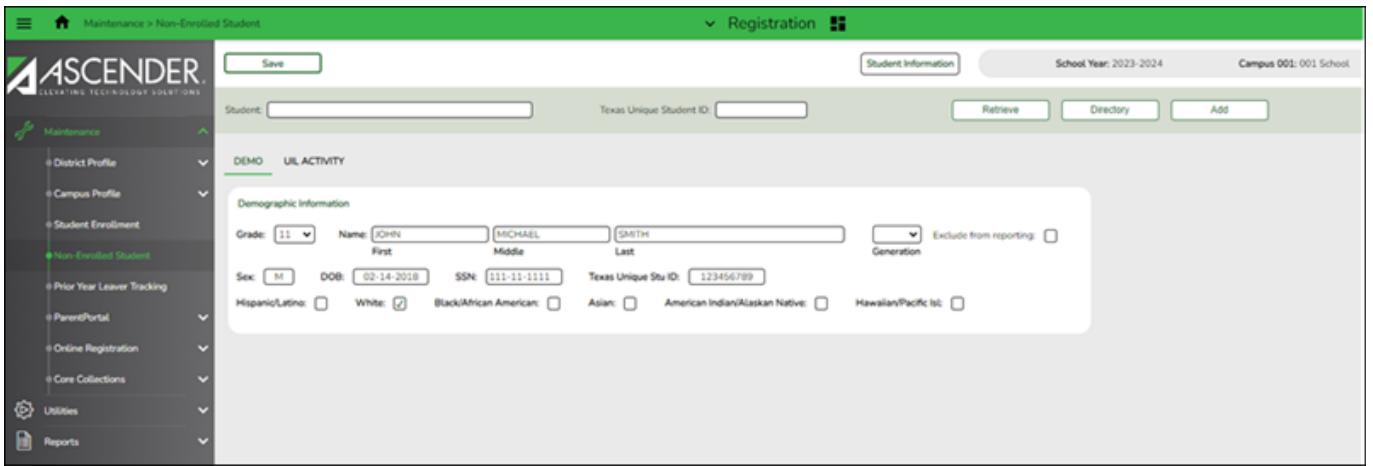
Created a new menu item so users are able to enter Demographic and UIL Activity information for non-enrolled students.



---

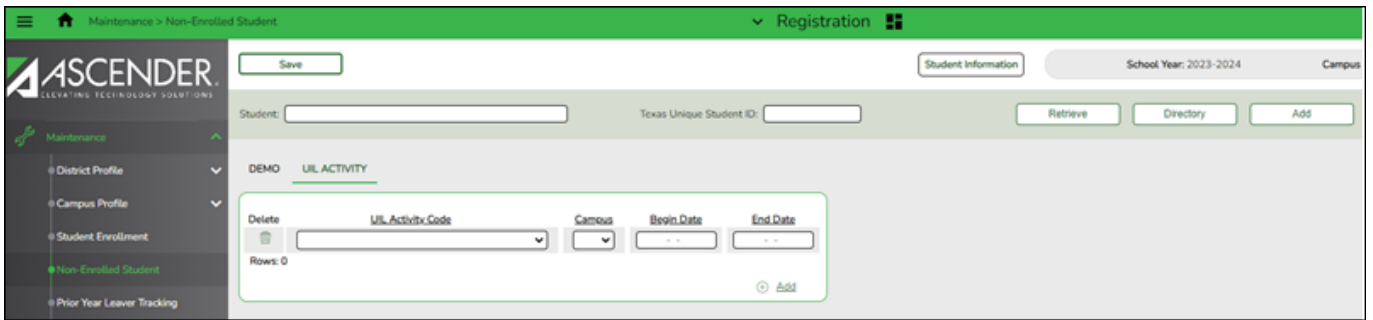
## Registration > Maintenance > Non-Enrolled Student > Demo

Created a new tab so users are able to enter Demographic information for non-enrolled students.



### Registration > Maintenance > Non-Enrolled Student > UIL Activity

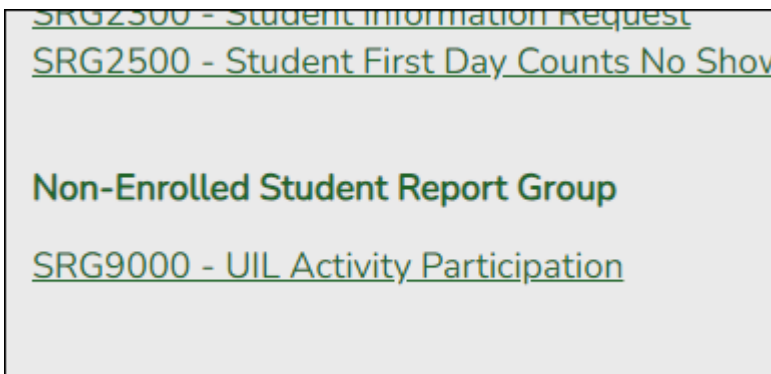
Created a new tab so users are able to enter UIL Activity information for non-enrolled students.



### Registration > Reports > Registration Reports (Non-Enrolled Student)

Created the **Non-Enrolled Student Report Group**.

Created report **SRG9000 - UIL Activity Participation**.



Date Run: 2/28/2024 11:40 PM		UIL Activity Participation					Program ID: SRG9000								
Cnty-Dist: 001-901		101 School					Page: 1 of 1								
Campus: 101															
NAME	UID	SSN	S e x	DOB	Hispanic	Amer Indian	Asian	Black	White	Pacific Isl	E x c l u s i o n	UIL Activity	Campus	Begin Date	End Date
Userious, Test I	1010101234	121-21-2121	M	03-12-2018	N	N	N	N	Y	N	N	010 - Literary Criticism	101	10-10-2023	

## Test Scores > Utilities > Import Test Scores

- Updated the program to align with new Cambium student data standards so that SSN/PEIMS IDs will no longer be included in SDR requests and state assessment results files.
- Added fields for school year 2024 for **TELPAS** and **TELPAS Alternate Test** imports.



**ASCENDER**®  
ELEVATING TECHNOLOGY SOLUTIONS

## **Back Cover**