



ASCENDER Test Scores - Import Assessments

Table of Contents

ASCENDER Test Scores - Import Assessments 1

ASCENDER Test Scores - Import Assessments

This process involves retrieving a file from Cambium Assessment, Inc. (CAI) and uploading it into the ASCENDER Test Scores application. Importing assessment scores into the ASCENDER Test Scores application has the major benefit of subsequently displaying this data on AARs, Personal Graduation Plans, and in TReX files. These few simple steps provide assessment data in all necessary applications.

Prerequisites

- You must have credentials to log into Cambium and have ordered assessment reports.
- This guide assumes you are familiar with the basic features of the ASCENDER Student system and have reviewed the ASCENDER Student Overview guide.
- For more detailed information about individual fields, please see the online Help in the ASCENDER Student system.

Quick Checklist

- Download files from Cambium.
- Import the files into the ASCENDER Test Scores application.

Import Assessments into Test Scores

You are able to import test scores from XXX using the Import Test Scores utility.

Download Files From Cambium

Access and download your Texas assessment files from Cambium.

- Go to *texasassessment.gov* and from the top menu, click on **Testing Personnel**.

Home Students and Families Testing Personnel Assessment Programs Resources En español

TEA | TEXAS ASSESSMENT VISIT TXSCHOOLS.GOV

Learn More About Texas Assessments

View Your Child's Test Results

TEA Family Portal

Unique Student Access Code (Código de acceso único del estudiante):

6-Character Unique Code

Date of Birth:

Month Day Year

Sign On

More Login Information
[Where's my access code?](#)
[Lookup unique access code?](#)
[Don't have a unique access code?](#)

More Support
[Supported Browsers](#)
[Terms of Use & Privacy](#)

Browse by User

Students and Families Testing Personnel Educators

NOTE: Depending on how you want to receive the assessment file, select *Prepare for Testing > Test Information Distribution Engine (TIDE)*.

Testing Personnel

Prepare for Testing

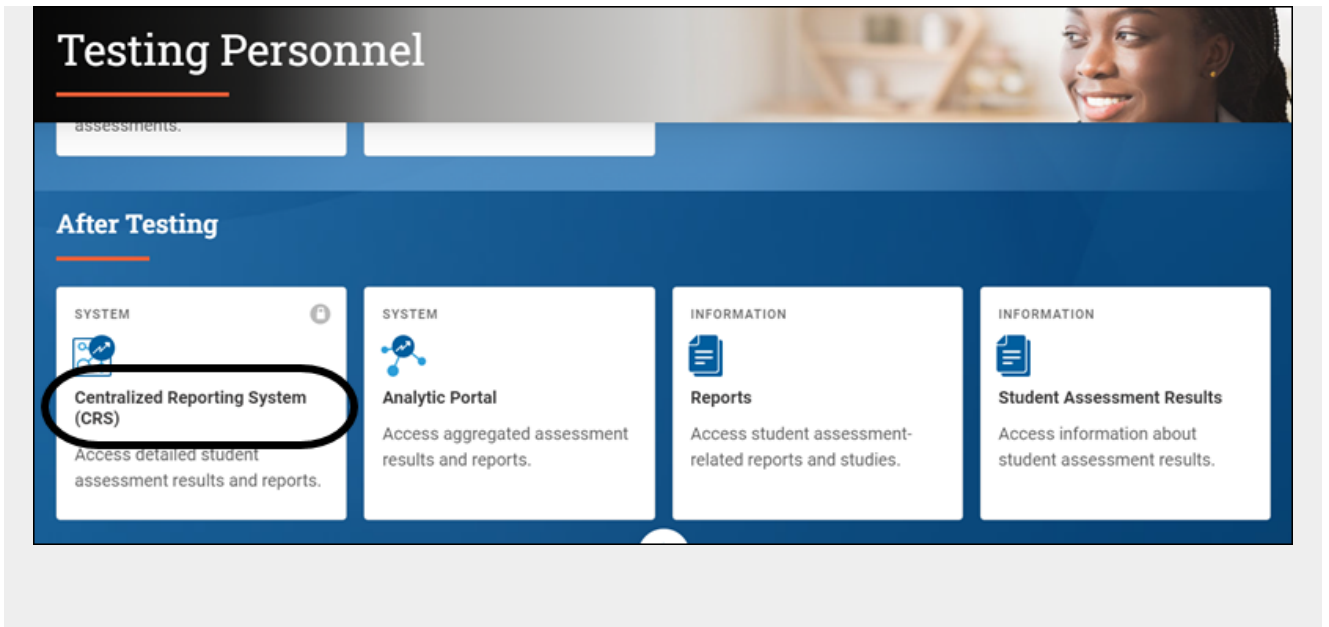
Test Information Distribution Engine (TIDE)
Manage students and users for testing and reporting, order test materials, and track student participation.

Learning Management System
Access trainings on the Texas Assessment Program.

Practice and Released Tests
Access practice and released tests to become familiar with question types and the online testing environment.

Texas Formative Assessment Resource (TFAR)
Create items, build tests and share content with others.

or, select *After Testing > Centralized Reporting System (CRS)*



Log in with your user ID and password.



You will be directed to the dashboard for the application you selected.

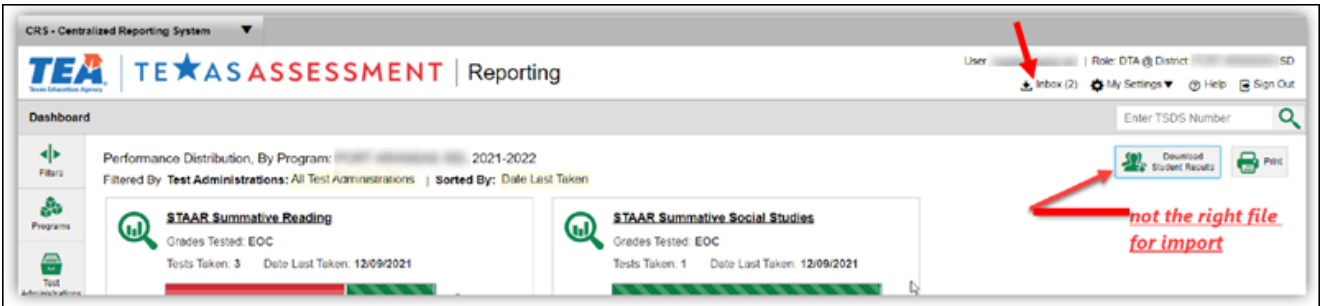
The file for importing test results into ASCENDER and other third party systems will automatically be generated by Cambium and will be sent to the District Test Coordinator's Inbox within Cambium. Users are not able to create the file ASCENDER needs for import. It must be created for the district by Cambium.

Click on the **Inbox** to acquire test score files.

TIDE:



CRS:



NOTE: Do not click on the **Download Student Results** button as this will not produce the correct file format required by TEA.

Import the File Into the ASCENDER Test Scores Application

The Import Test Scores utility in the ASCENDER Test Scores application allows you to import your DAT assessment files.

Test Scores > Utilities > Import Test Scores

- Select the type of test you would like to import.

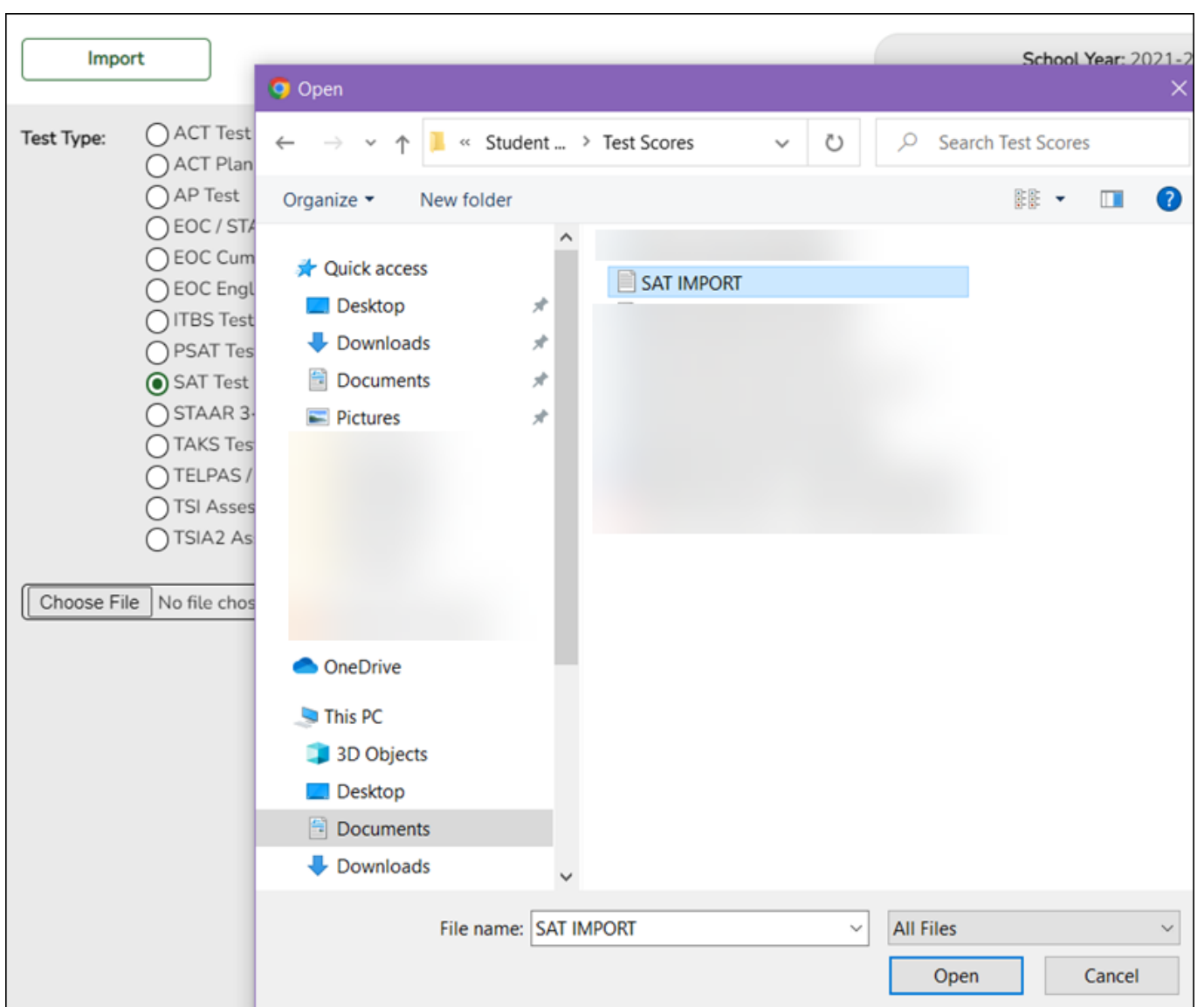
Import

Test Type:

- ACT Test
- ACT Plan Test
- AP Test
- EOC / STAAR Alternate 2 EOC Test
- EOC Cumulative Hist Test
- EOC English Trans Test
- ITBS Test
- PSAT Test
- SAT Test
- STAAR 3-8 / STAAR Alternate 2 3-8 Test
- TAKS Test
- TELPAS / TELPAS Alternate Test
- TSI Assessment
- TSIA2 Assessment

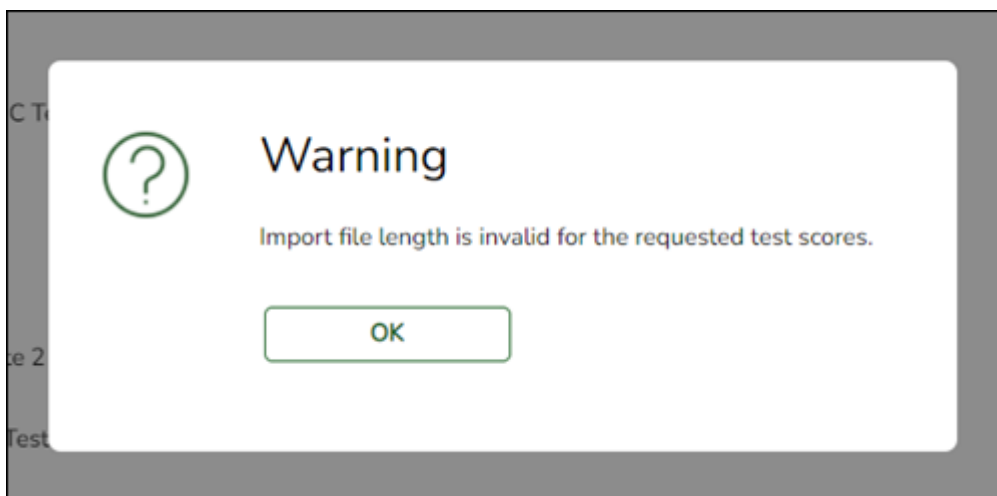
Choose File No file chosen

Click **Choose File**, locate your file, and open it.



Click **Import**.

If there are errors, a message is displayed.



Click **OK**.

Click **Show Error Rpt** to view the error report.

You can open and save the report as a CSV or PDF file.

If there are no errors, a message is displayed.

The assessment scores that did not have errors are imported and you can view them on Maintenance > Individual Maintenance by student.



Back Cover